

MapStory



The Atlas of Change the Everyone Can Edit

ICA OSGeo Labs
GeoForAll
Christopher Tucker
@MapStory

MapStory is a new dimension to the **global data commons** which empowers everyone to organize and share what they know about the world **spatially and temporally**, rather than encyclopedically, the way Wikipedia already empowers us to.



WIKIPEDIA



MapStory is a **Community**, Not a Company

The MapStory Foundation is an
educational **non-profit** committed
to life-long learning through
making and **storytelling** in **space**
and **time**.

Crowd Sourcing



Story Telling



Temporal

Social

Narrative

Temporal

To understand the challenges of today and tomorrow, you must understand the **past**.

We must self consciously think about **change over time**, and demand that all data be spatio-**temporally** enabled.

Social

To understand the value of the data from the crowd, you must understand its lineage and the **social context of its production.**

We must self consciously construct a “high attribution” **social platform** that enables “structured dispute resolution.”

Narrative

To understand the world, people use more than just an ordered accumulation of facts. They tell **stories.**

We must self consciously empower everyone to compose and spatio-temporally enable **narratives.**

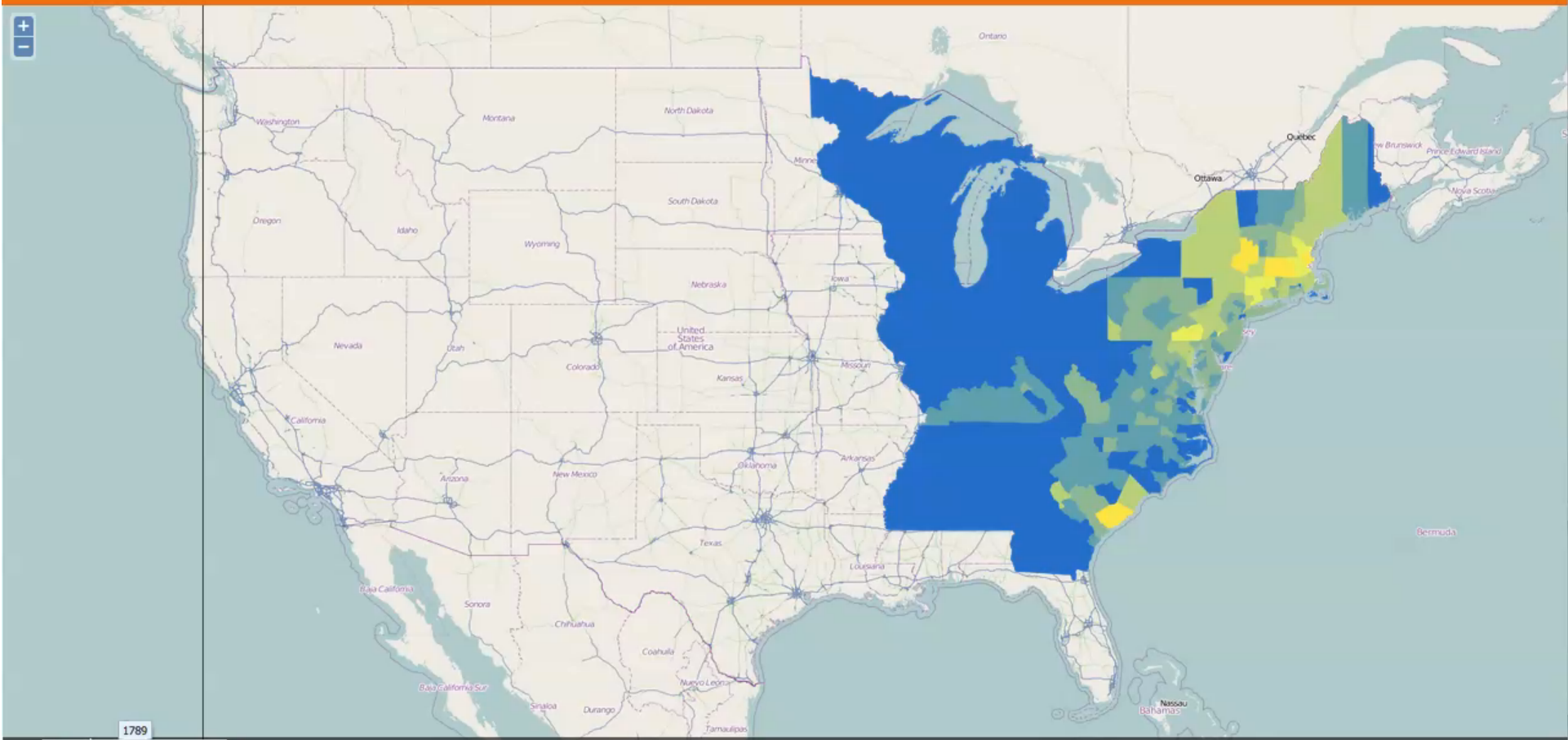


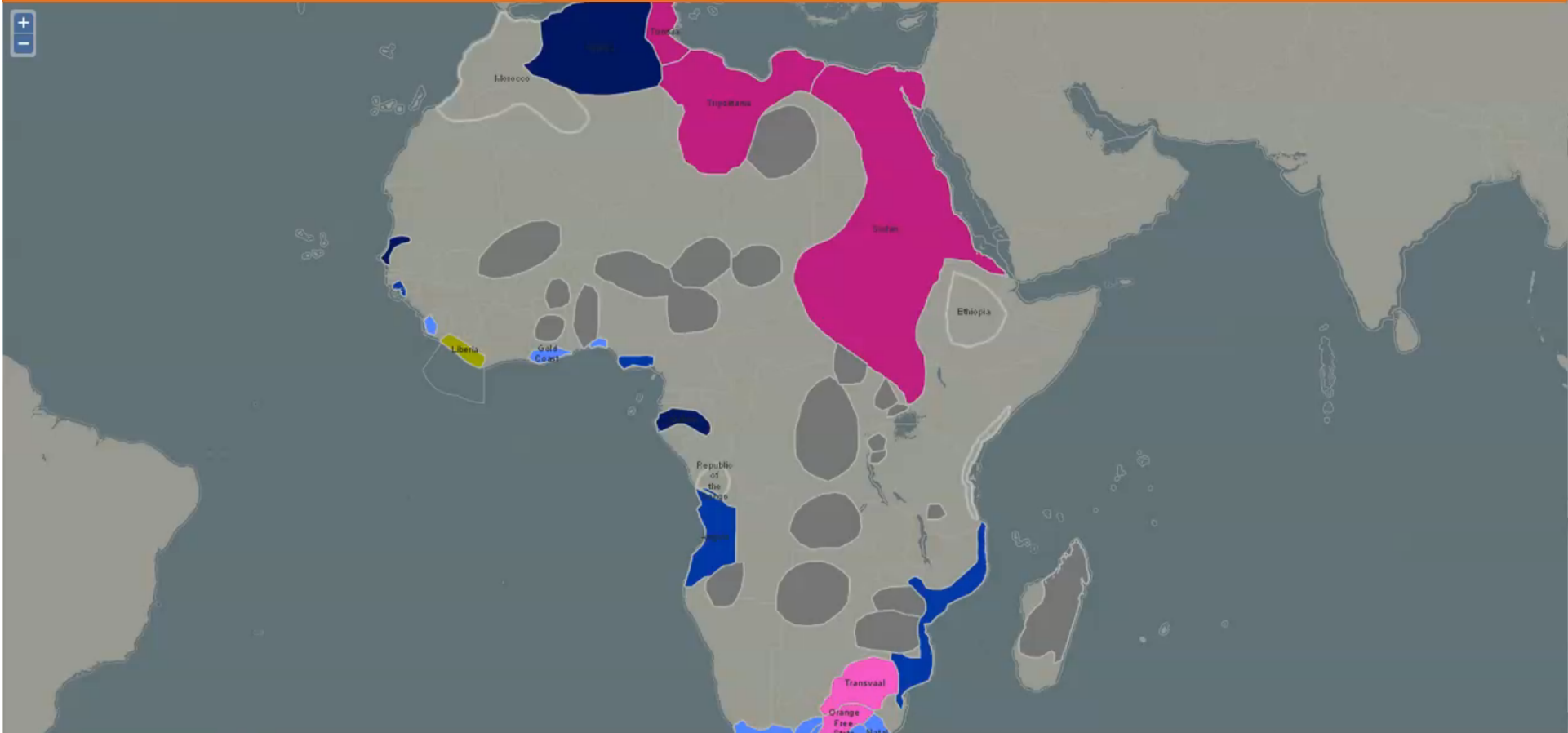
DONATE NOW Log out

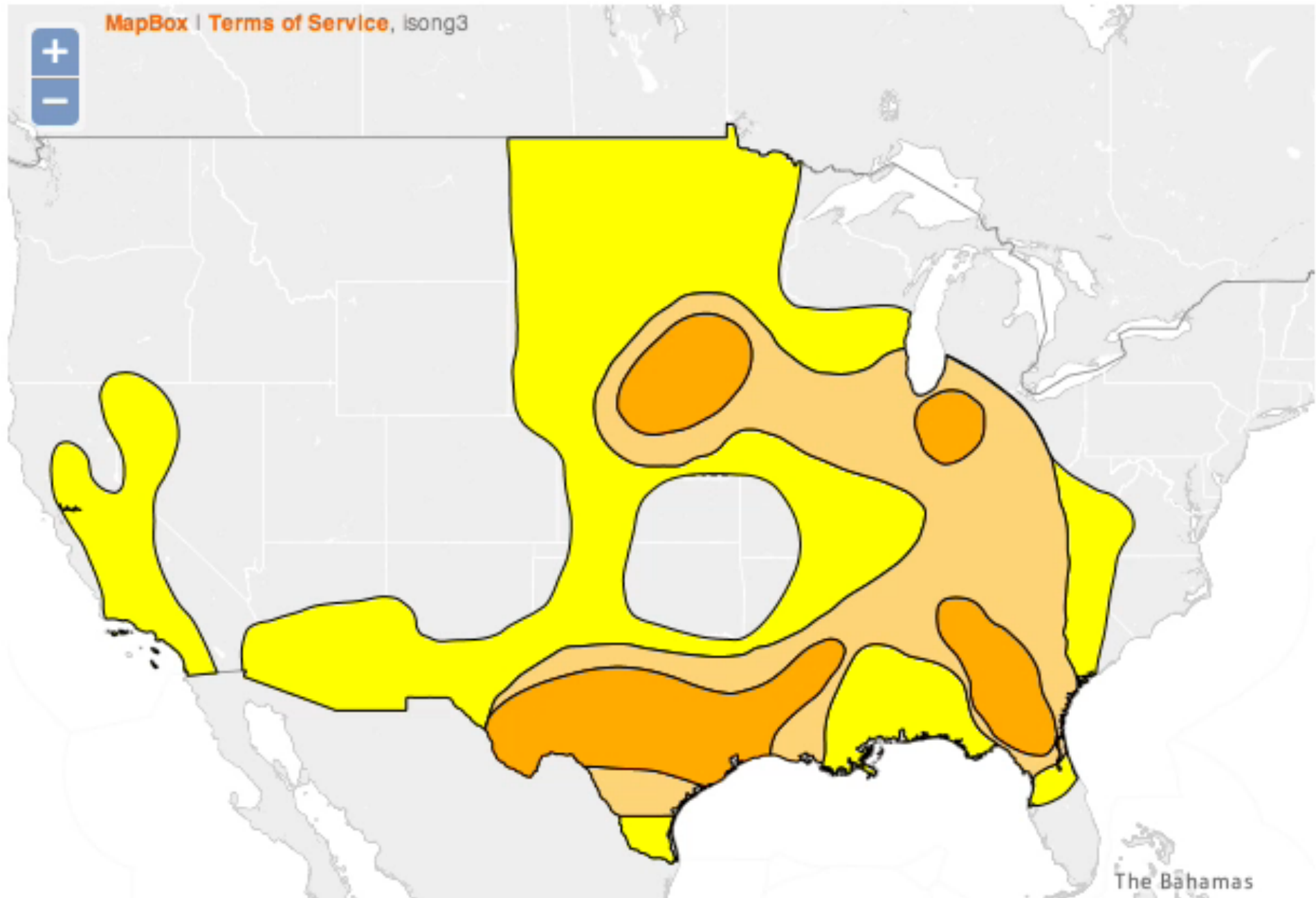
Welcome ctucker

SECTIONS SEARCH MAPSTORY HOW TO ABOUT PROFILE ADMIN

Quick Search







Map navigation and control bar. From left to right: a play button, a red circular progress indicator, a refresh icon with '2x' zoom, a left arrow, a right arrow, a list icon, a gear icon, and a full-screen icon. Labels for 'Mexico', 'The Bahamas', 'Cuba', and 'Do' are visible at the bottom of the map area.



MapStory...a public prototype in development.

DONATE NOW

Log out

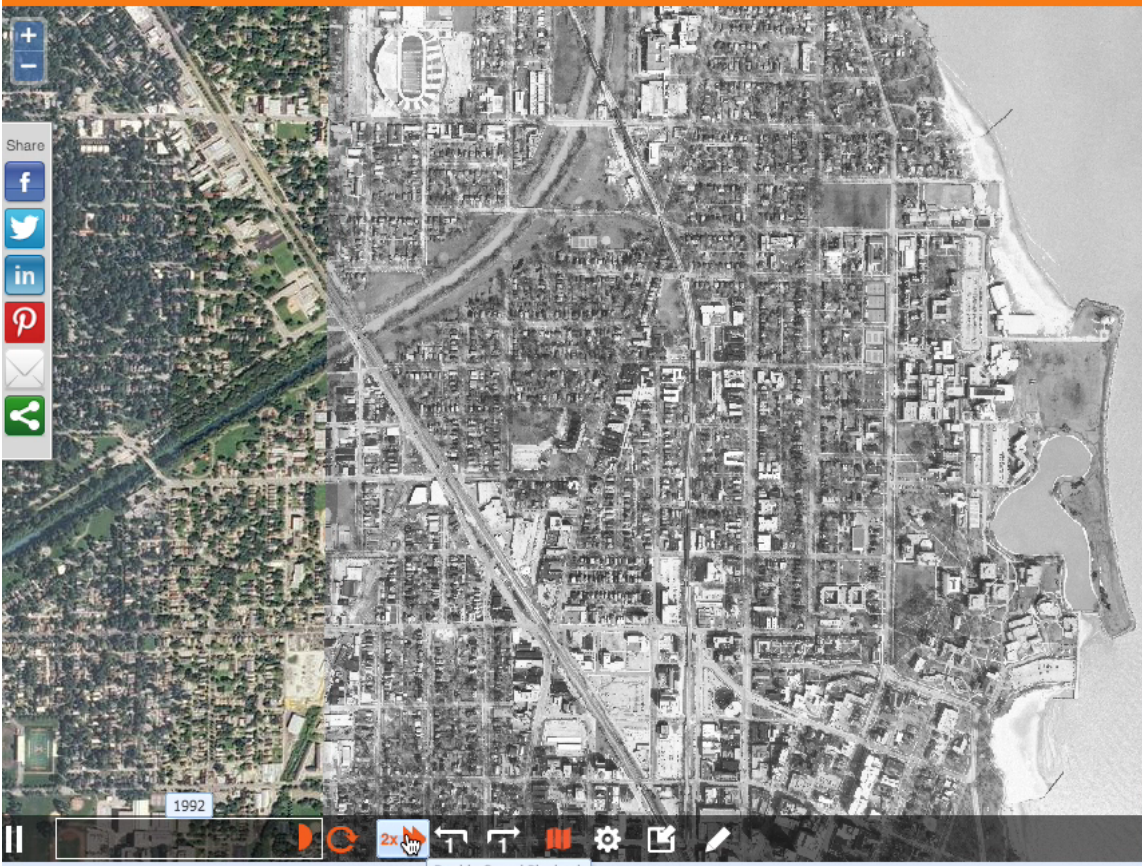
(4)

Welcome Jonathan Marino

Quick Search

SECTIONS SEARCH MAPSTORY HOW TO REFLECTIONS ABOUT BLOG PROFILE ADMIN

Search StoryLayers Search MapStories Search StoryTellers



Share

- Facebook
- Twitter
- LinkedIn
- Pinterest
- Email
- Print

Storylayers

- Evanston, IL, Northwestern University 1970-1993
- Expansion of Northwestern University 1947-1969

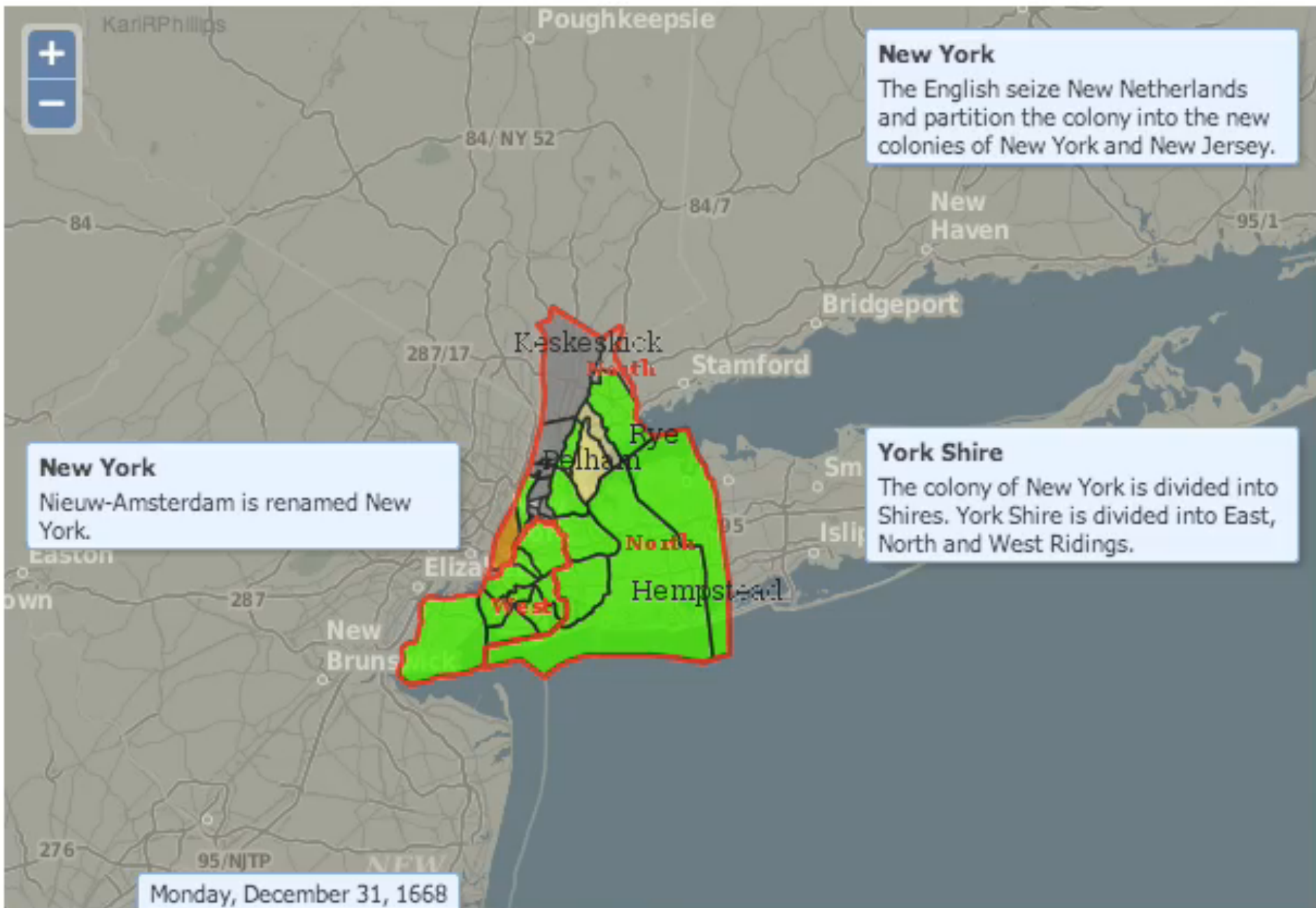
Base Maps

- Satellite Imagery
- Naked Earth
- OpenStreetMap
- No background

Feedback & Support

Map navigation controls: zoom in (+), zoom out (-), 2x zoom, pan, rotate, and other map tools.

The map interface features a dark grey background. A prominent yellow line starts from the top left, curves downwards, and then splits into two branches that extend towards the bottom right. A blue grid, consisting of three vertical and three horizontal lines, is overlaid on the right side of the map. A mouse cursor is visible near the top left of the map area. On the far left, there is a vertical zoom control with a plus sign above and a minus sign below. At the bottom left, a small white box contains the number '1864'. The bottom of the map area shows a toolbar with icons for map manipulation.



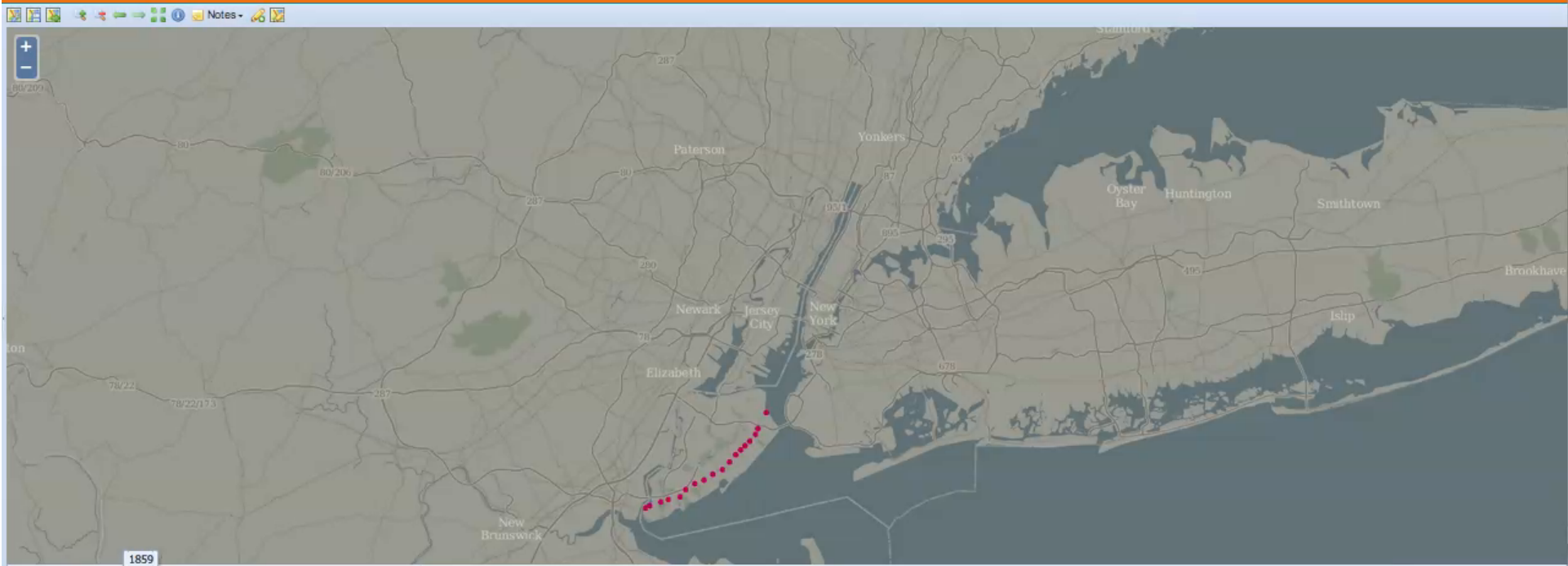
New York
The English seize New Netherlands and partition the colony into the new colonies of New York and New Jersey.

New York
Nieuw-Amsterdam is renamed New York.

York Shire
The colony of New York is divided into Shires. York Shire is divided into East, North and West Ridings.

Monday, December 31, 1668





Timeline controls: play button, 2x speed, undo, redo, settings.



GeoNode



OpenLayers, GeoExt, Bootstrap

REST
API

OGC



Standards based metadata
catalog publishing

OGC
CSW

django

Create and manage
metadata, users and groups

REST
OGC



Store, retrieve, perform
transactions on spatial data

SQL/DBC



PostGIS

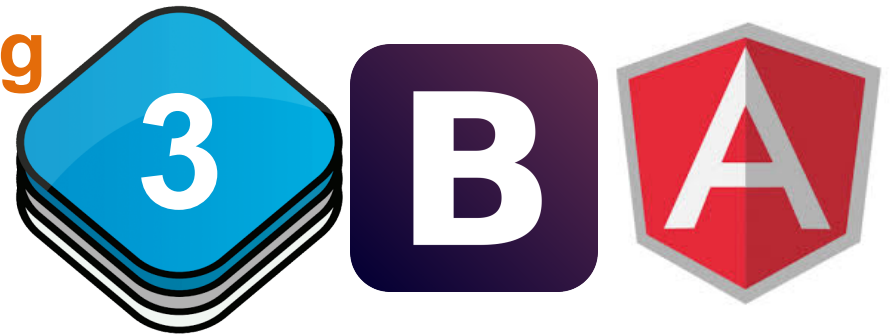
PostgreSQL

The Big Redesign...

Crowd editing is coming soon,
thanks to...



**Advanced MapStorytelling
Features** coming soon,
thanks to...



New Frontiers: GeoGit and Crowd Editing Change Over Time

- Imagine thousands of people editing the spatial history of their town – building by building, parcel by parcel, road segment by road segment.
- Imagine hundreds of experts editing the rise and fall of the Roman Empire.
- Imagine crisis mappers distributed globally all contributing to a complex humanitarian event as it evolves in space and time.
- Imagine earth scientists around the world crowdsourcing everything they know about how our planet has evolved over its history.

GeoNode



OpenLayers, GeoExt, Bootstrap, AngularJS, MapStory

REST
API

OGC



Standards based metadata
catalog publishing

OGC
CSW

django

Create and manage
metadata, users and groups

REST
OGC



Store, retrieve, perform
transactions on spatial data



The MapStory GeoNode Technical Roadmap

[http://wiki.mapstory.org/wiki/
Platform Development Status](http://wiki.mapstory.org/wiki/Platform_Development_Status)

[https://github.com/MapStory/mapstory-
roadmap/blob/master/roadmap.md](https://github.com/MapStory/mapstory-roadmap/blob/master/roadmap.md)

Passionate Communities Getting Involved

- 5000 years of evolving political boundaries, globally
- **MapStory Local of every community**
- Earth science data from our planet's origins until now
- **Complex humanitarian processes (e.g., LRA, human trafficking, etc.)**
- Historical wars and battles
- **Multi-lingual, longitudinal gazetteer**
- Evolving social networks
- **...and on and on and on and on and on...**

How Can You Get Involved?

- Help build a QGIS plugin for MapStory!
- Identify online tools for tools.mapstory.org to help lay people work with spatio-temporal data.
- Pitch in on our OpenLayers 3.0/Bootstrap/Angular re-design
- Join the GeoNode development community and help drive the engine underneath MapStory.org
- Join the MapStory Volunteer Technical Community to help teachers, students, and others get moving with MapStory.
- Re-tweet @MapStory and help raise awareness
- Begin your own data projects at MapStory.org
- ...let us know your crazy idea, and how the MapStory Foundation can help you succeed!

Join the MapStory Community

We are building an ecosystem for continuous improvement and looking for **co-conspirators**

MapStory



Tell **Your** Story!

Christopher Tucker | tucker@mapstory.org | @MapStory | 703-981-9373