



WorldDEM™ Reaching New Heights

GEO ELEVATION
SERVICES BY **ASTRIUM**

Together pioneering excellence





WorldDEM™
Standardised Global DEM



WorldDEM™
Unprecedented Quality

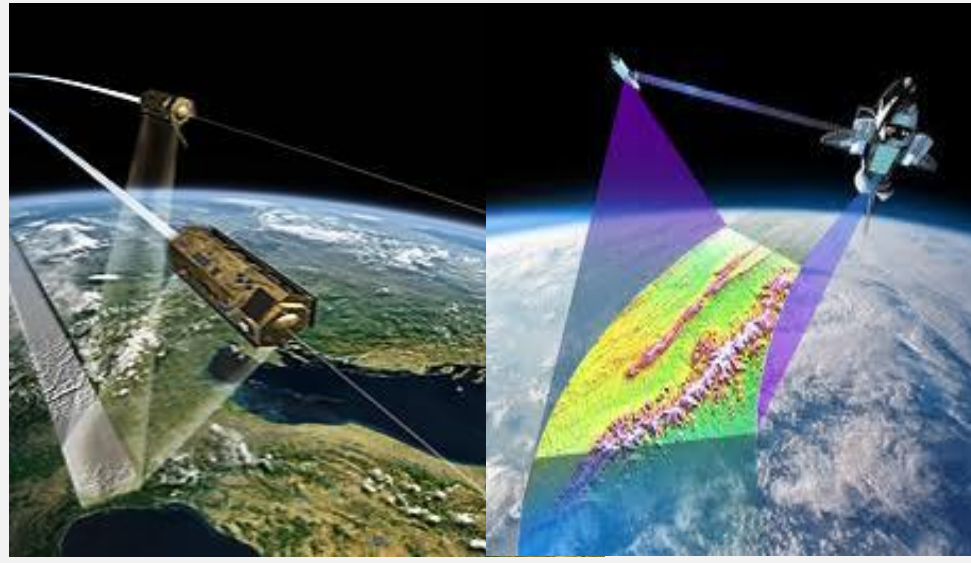


WorldDEM™
Accuracy of a New Dimension

TanDEM-X WorldDEM Mission

TanDEM Mission

- First configurable SAR interferometer in space
- Bi-static operation: one of the two satellites emits radar signal, backscatter by both
- Double-helix formation flying (DLR innovation): 200 meters distance between satellites – at a speed of 28,000 kilometers per hour



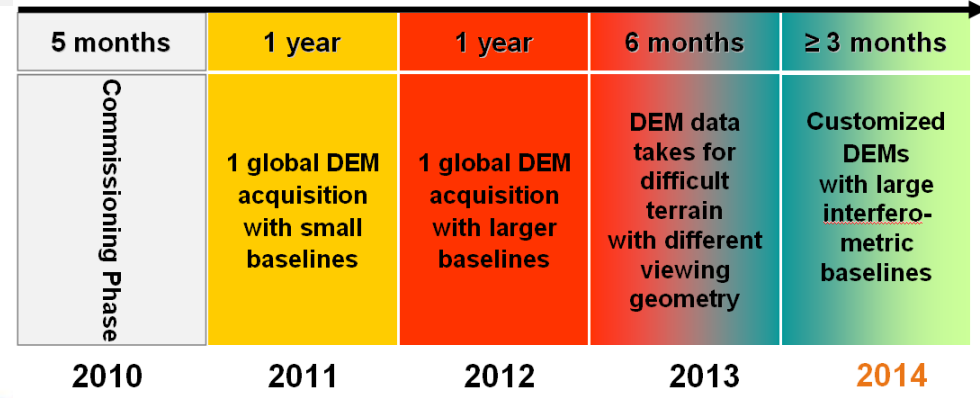
WorldDEM

- **3 years to cover entire globe** (specific time windows – otherwise standard imaging requests performed by both satellites)
- **DTED/HRTI Level 3 (global)**
- Consistent, seamless global coverage

Secondary Mission Goals

- HRTI Level 4 DEM acquisition (local)
- Further scientific experiments

Nominal Data Acquisition 3 (+?) Years



Production ——— TDX_IDEM TDX_DEM
 DEM Availability TDX_IDEM TDX_DEM



This document and its content is the property of Astrium [LufSAS/GmbH] and is strictly confidential. It shall not be communicated to any third party without the written consent of Astrium [LufSAS/GmbH].

■ Coverage

A standardised DEM for any spot on Earth at the same quality

■ Quality

Allows you to close gaps in areas where no adequate DEM exists to date and extend to areas missing so far (cf. SRTM) with high accuracy

■ Accuracy

Improve the performance of today's globally operating navigation systems and applications

■ Availability

Offers you easy and instant access to DSM basic due to an automatic order process and the global dataset being available, ensuring immediate delivery

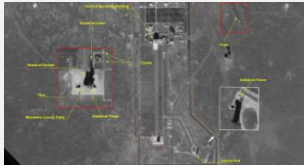
The unique and unrivaled combination of **Coverage, Quality, Accuracy, and Availability**, setting a new standard in global elevation modeling

What can the WorldDEM™ be used for?

- National and thematic mapping
- Air and surface based system navigation
- Airport landing approach mapping (ICAO)
- Air Traffic Management (ATM)
- Engineering and infrastructure design
- Flight planning in 3D and simulation
- Improved crisis intervention planning
- Insolation and surface runoff mapping
- Intelligent Transportation Systems (ITS)
- Management of oil and gas fields
- Mission planning
- Mobile telecommunications engineering
- Orthorectification of aerial or satellite imagery
- Modeling water flow or mass movement
- 3D visualisation
- Terrain and target analysis, line-of-sight analysis



Detailed and Precise Terrain Knowledge for Military Operations



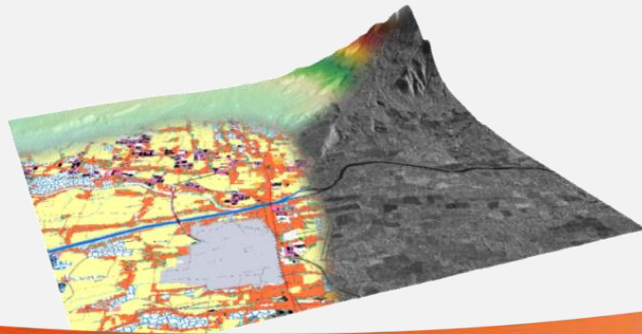
WorldDEM™ is the perfect foundation layer for all intelligence data and products

- Aviation security
- Aircraft and cruise missile mission planning and navigation (low-altitude flight, line-of-sight analysis)
- Landing approach planning
- Training and simulation operations (flight simulation)
- Accurate geo-referenced base for “Intelligence Dossier”
- 3D picture of terrain
- Planning and assessment of operations in the field: threat evaluation, target detection and location, damage assessment
- Accurate and uniform geospatial reference data for headquarters and joint forces

Accurate Height Information for Topographic Mapping

WorldDEM™ provides standardised homogenous seamless large-area coverage

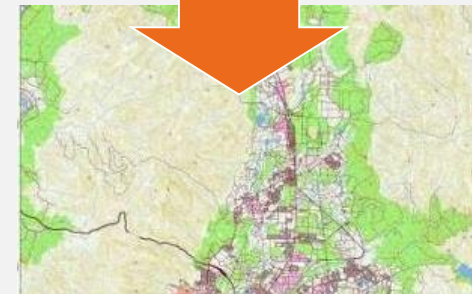
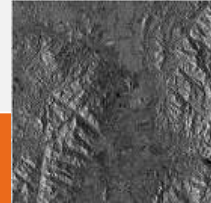
- Multi-scale mapping: topographic maps
- Orthorectification of any other imagery (VHR optical data)
- Maps as basis for prevention measures (e.g. flood modelling) or post-event activities (e.g. flood maps, damage assessment maps)
- Standardised quality control and validation on the basis of a consistent dataset like WorldDEM™



Shaded Colour Relief



Orthorectified Image

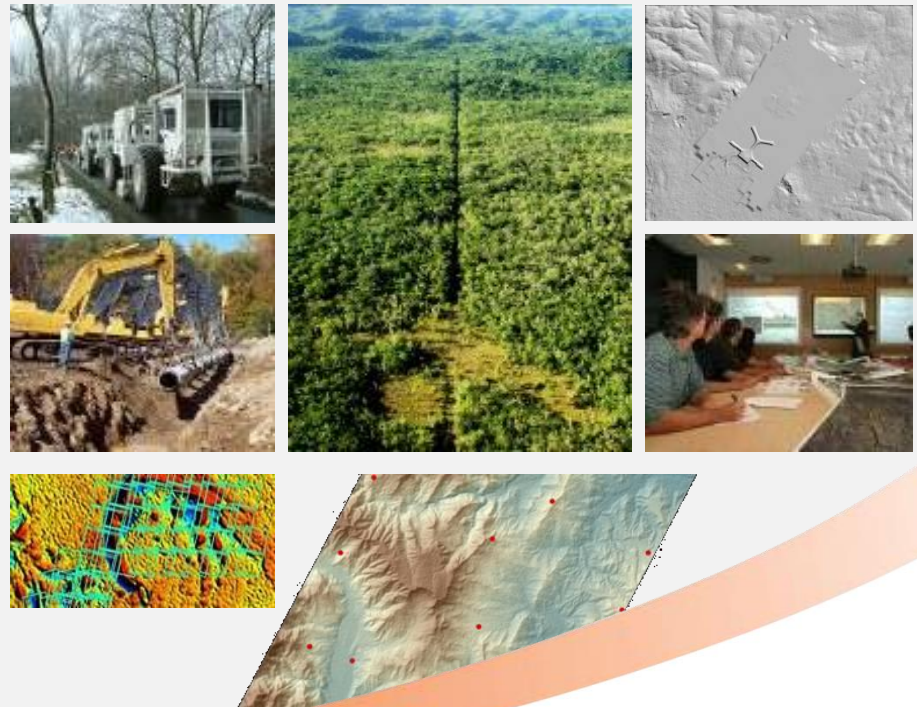


Topographic Map 1:50,000

Worldwide Elevation Information for Geological Prospection

WorldDEM™ is a homogeneous global DEM for any location - no matter how remote or difficult

- Feasibility Studies
 - Scouting
- Exploration
 - Scouting
 - Input into geophysical processing / modelling
 - Orthorectification of multi-source geodata
 - Integration into topographic mapping
- Development
 - Airport planning (terrain, flight approaches)
 - Infrastructure planning
 - Roads, supply units, accommodation
 - Pipelines
 - Oil- and gas processing facilities
- Preparation of seismic measurements

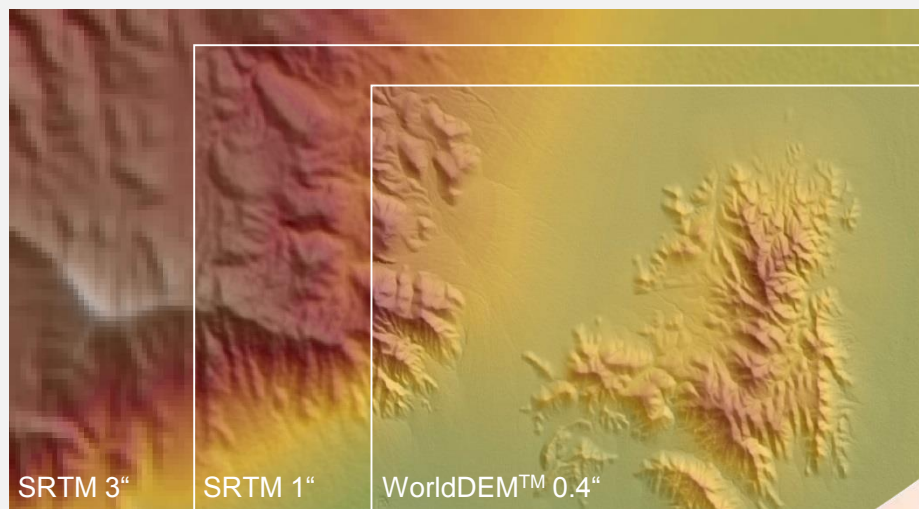


A topographic map of a mountainous region, likely the Alps, rendered in a color gradient from green (low elevation) to white (high elevation). The map is viewed from an elevated perspective, showing the intricate details of the terrain. The text "WorldDEM™ Offering" is overlaid in white, bold, sans-serif font. A blue horizontal line is positioned below the text. The bottom of the image features a curved orange-to-white gradient bar.

WorldDEM™ Offering

WorldDEM™ - Reaching New Heights

- First worldwide available DEM product at HRTE3 level
- Homogeneous, seamless DEM covering the entire Earth's land mass (150 Mio km² pole-to-pole)
 - Data acquisition within 3 years only (one unique source)
 - Acquired by TerraSAR-X and TanDEM-X flying in a very close and precise formation
 - Based on radar interferometric technology
- WorldDEM™ will be available commercially from 2014
- WorldDEM™ will be part of the GEO Elevation product suite



GEO ELEVATION
SERVICES BY **ASTRIUM**

WorldDEM™ DSM basic

Digital Surface Model includes heights of all objects (natural and man-made)

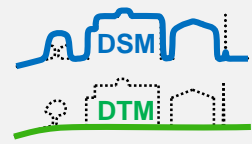
Editing steps and rules:

- Removal of radar-typical artefacts (single pixel: “spikes” and “wells”)
- Interpolation of small voids (smaller or equal 8 pixels)

Sample figure: Elevation10 DSM basic



WorldDEM™ DSM hydro

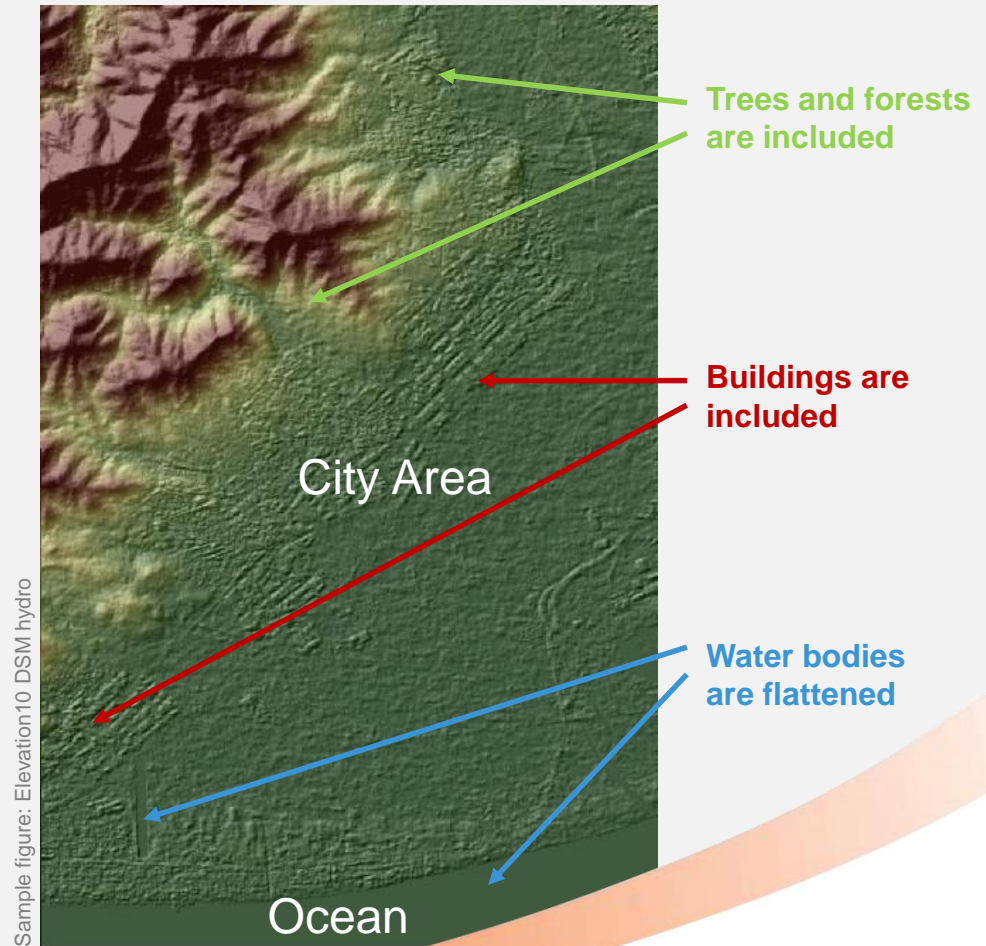


Digital Surface Model includes heights of all objects (natural and man-made)

Extraction of water body features derived from radar image

Editing steps and rules:

- **Lakes & reservoirs** are set to a single elevation
 - Water bodies: width: >50m, length: >150m
- **Rivers & canals** are flattened with monotonic flow
 - Water bodies: width: >50m, length: >300m
- **Ocean** elevation is set to 0m
- Coastal infrastructure features and bridges are removed



Digital Terrain Model represents bare earth

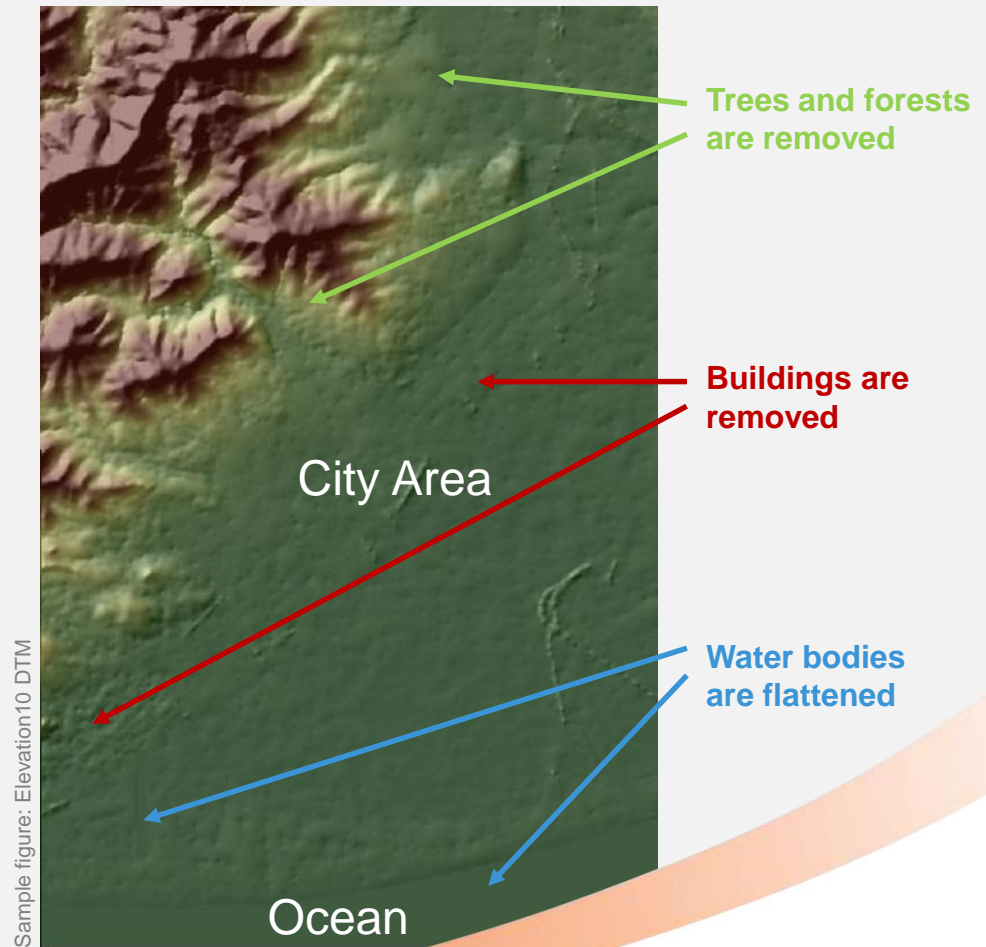
Editing steps and rules:

Based on radar image and DSM hydro

- Trees & forests are removed
- Man-made objects (e.g. buildings) are removed

Procedure: measurement of object's height

- Detailed terrain information
- Revealing small-scale terrain structures covered by vegetation

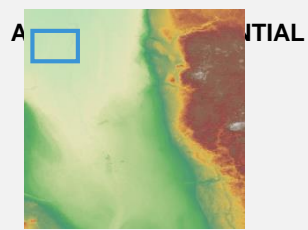


WorldDEM™ Specifications

Products	DSM basic, DSM hydro, DTM	
Vertical Accuracy	Abs.	<10m (LE90)
	Rel.	<2m (slope ≤20%) (LE90) <4m (slope >20%) (LE90)
Horizontal Accuracy	Abs.	<10m (CE90)
Grid Spacing	Latitude: 0.4" (~ 12m) Longitude: depending on Latitude (~12m)	
File Format	GeoTIFF	
Data Type	32-bit floating	
Vertical Unit	Meter	
Projection Information	Geographic Coordinates; UTM Other projections on customer's request	
Coordinate Reference System	<ul style="list-style-type: none"> • Horizontal reference datum: WGS84 • Vertical reference datum: EGM2008 Other reference systems on customer's request	
Auxiliary Metadata	XML-Format, ISO 19115 compliant	
Quality Layers	Data Acquisition Mask, Interpolation Mask, Filling Mask, Editing Mask, Water Body Mask	
Image Mosaic Layer	Amplitude Mosaic Image	

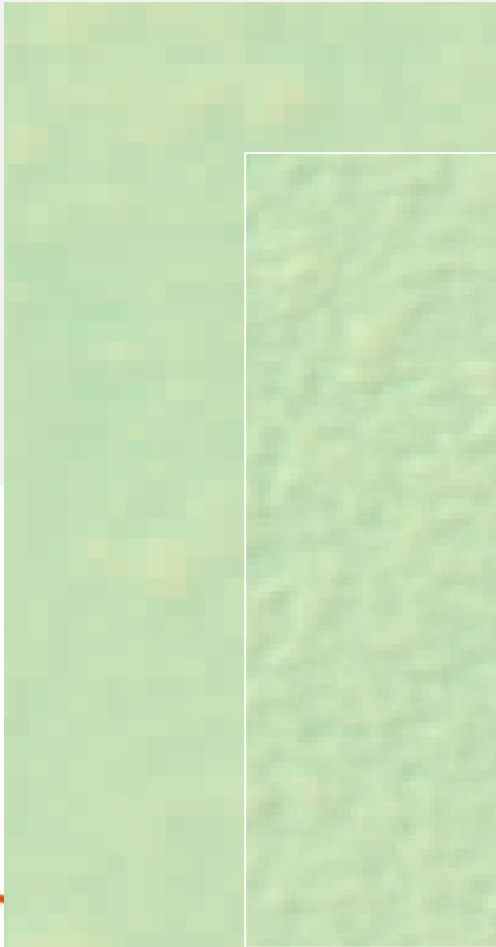


Close-Up

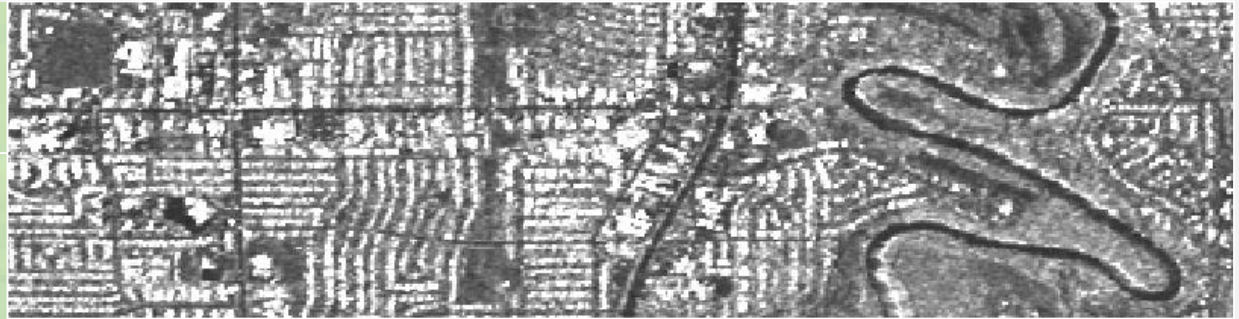


Visual assessment - Minnesota

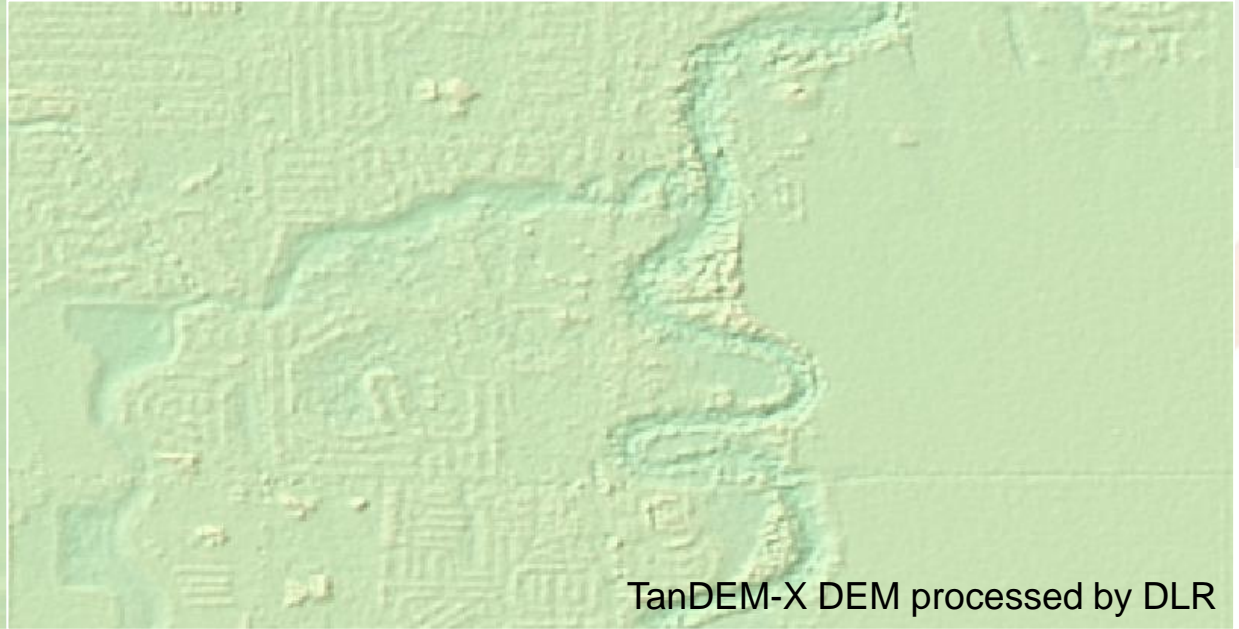
SRTM 3"



SRTM 1"



TanDEM-X 0.4"



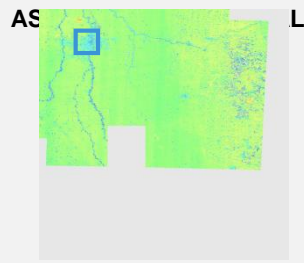
TanDEM-X DEM processed by DLR

TanDEM-X SAR amplitude

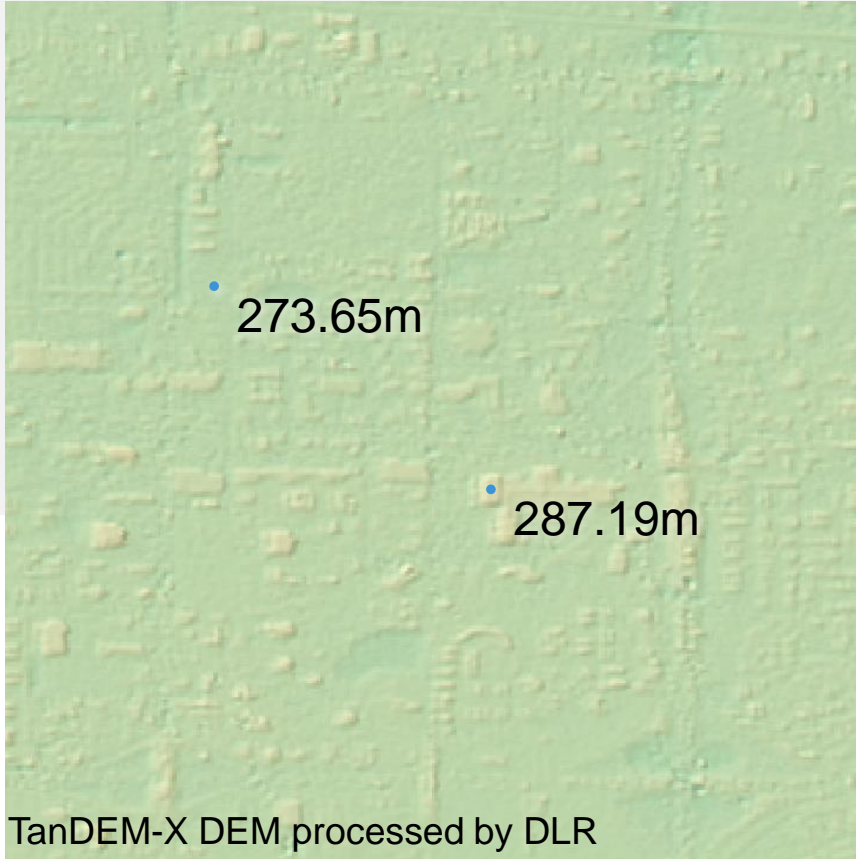
This document and its content is the property of Astrium [LuftSAS/GmbH] and is strictly confidential. It shall not be communicated to any third party without the written consent of Astrium [LuftSAS/GmbH].

Statistical assessment vs. LiDAR - Minnesota

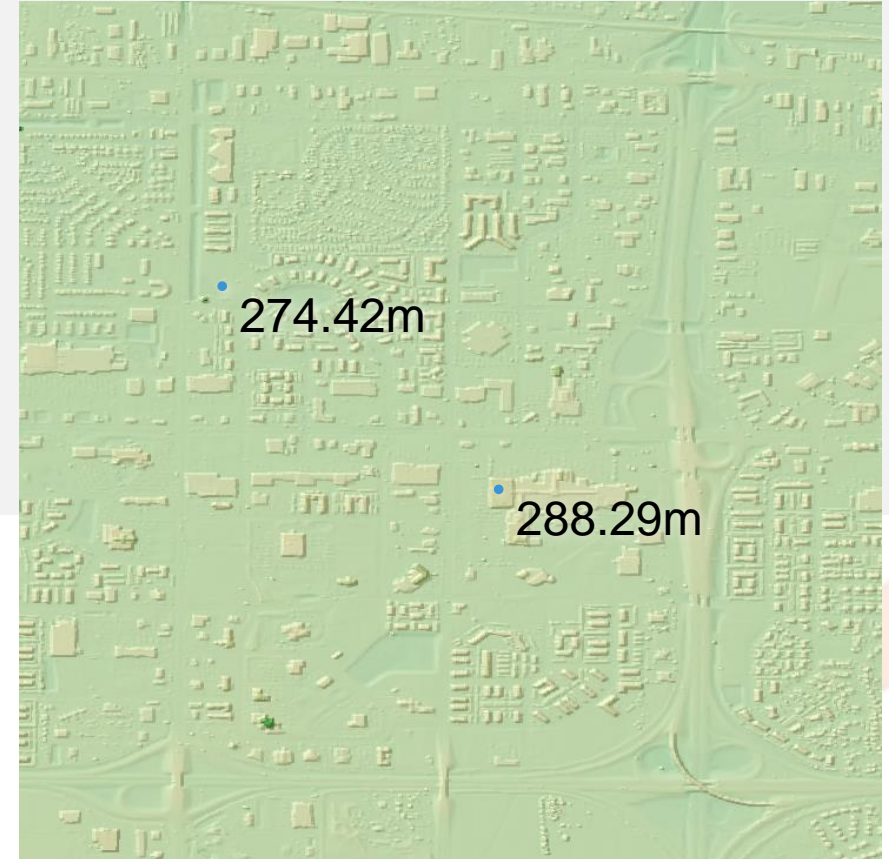
Close-Up



TanDEM-X „urban“



LiDAR DSM „urban“



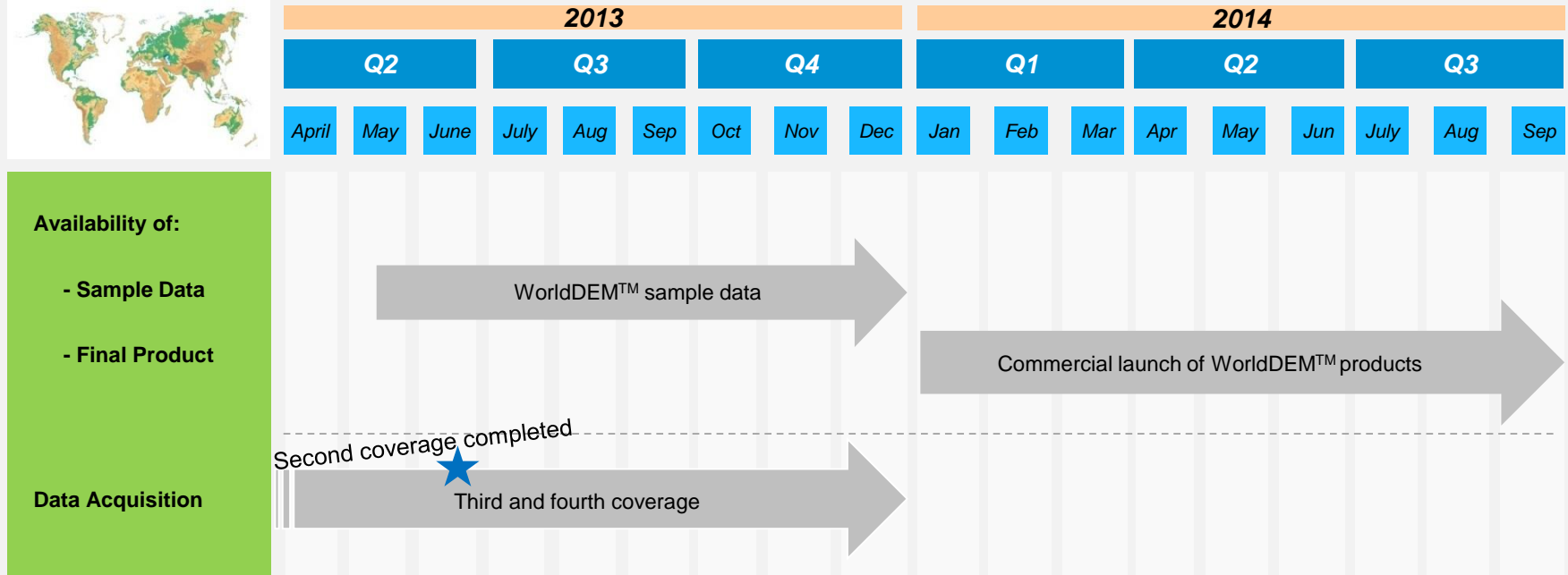
WorldDEM is extremely precise - Building structure is clearly visible



WorldDEM™

Product Availability

WorldDEM™ Product Availability





WorldDEM™

Annex

Demo Datos
Barquisimeto



**Gracias por
su atención**



alfonso.casado@infoterra.es
info@agroprecision.net

www.astrium-geo.com
www.infoterra.es
www.agroprecision.net



ASTRIUM
AN EADS COMPANY